

summer 2023

the reach
GALLERY MUSEUM

ART HISTORY CULTURE

summer 2023

HOURS

Tuesday - Friday	10-5PM
Saturday	12-5PM

Admission by donation



Accessibility: Wheelchair accessible, gender inclusive restrooms, limited free parking.

The Reach is a contemporary art gallery and local heritage museum located on unceded Stó:lō territory.

There's always something to do at The Reach! Visit our website for a full list of activities and events!

the reach
GALLERY MUSEUM

thereach.ca
32388 Veterans Way
Abbotsford, BC, V2T 0B3
604.864.8087

As I write this, buds have appeared on the tree outside my window, cherry blossoms festoon the Civic Plaza, and The Reach's resident Canada geese hiss and holler as they prepare nests to protect their young. It is difficult to ignore the natural world teeming around us at this time of year—it seems to insist that we turn our attention to the wonders of its beauty and complexity. The exhibitions and programs we present this season similarly encourage us to consider the natural world: particularly its role as teacher and collaborator.

Jennifer Willet's *When Microbes Dream* introduces us to an unusual cast of characters placed in laboratory/theatre settings and asks us to imagine what the scientific processes look like from the perspective of the non-human. In *Drawn from Water*, longtime collaborators Ed Pien and Karin van Dam use their immediate surroundings as muse and accomplice, treating both natural and mass-produced environments as partners in the realization of their works.

We hope you will take part in our public programs this summer! Our kids' camps are back and our facilitators have planned some fun and innovative activities that combine art and science to allow campers exciting opportunities to engage with current exhibitions. Spaces will fill quickly, so make sure to register your budding artist soon!

We are excited to partner once again with the City of Abbotsford Department of Parks, Recreation and Culture to support the Go Play Outside initiative. Find them in city parks this summer to pick up your free art-making kit, inspired by our season of exhibitions. And the Abbotsford Film Festival returns this August with top-notch local and international films, live music, and more.

Visit our website for registration details and a full calendar of events and programs, and we hope to see you soon at The Reach!

Laura Schneider
Executive Director



Summer 2023 Calendar

Exhibitions

Drawn from Water _____ MAY 26-SEPTEMBER 16

When Microbes Dream _____ MAY 26-SEPTEMBER 16

Voices of the Valley _____ ONGOING

Programs

Community Arts Space

Central Fraser Valley Graphic Guild _____ MAY 26-JUNE 10

Abbotsford Senior Secondary School Art Activism Class _____ JUNE 14-JUNE 24

Classes and Workshops

Summer Art Camps _____ BEGINNING JULY 4

Events

Opening Reception _____ MAY 26

Artist Talk _____ MAY 27

Abbotsford Film Festival _____ AUGUST 25 & 26

Outreach Events

Go Play Outside _____ BEGINNING MAY 26, MILL LAKE PARK

2SLGBTQIA+ Seniors Event _____ JUNE 8, ABBOTSFORD REC CENTRE

National Indigenous Peoples Day _____ JUNE 19, ABBOTSFORD ART CENTRE

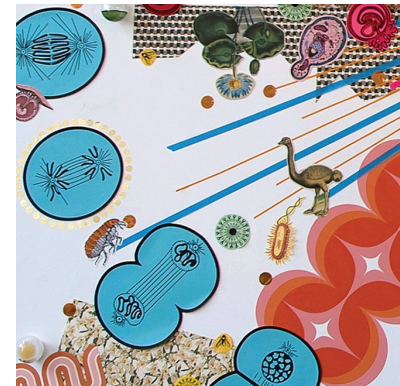
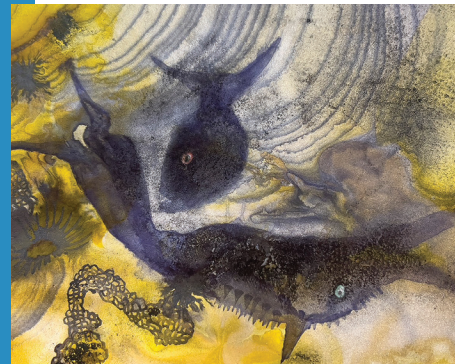
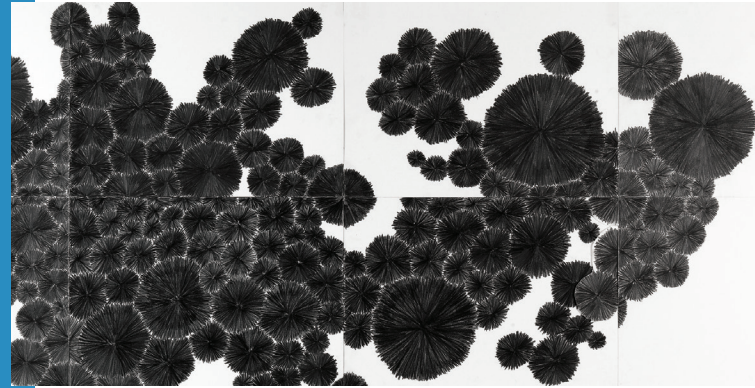
Canada Day _____ JULY 1, EXHIBITION PARK

Berry Fest _____ JULY 8, DOWNTOWN ABBOTSFORD

Fraser Valley Pride Festival _____ JULY 29, FRASER RIVER HERITAGE PARK

Docent Tours

Thursdays & Fridays _____ 10AM-2PM



exhibitions

Drawn from Water and *When Microbes Dream* both present worldviews in which humankind is not at the centre, but rather just one amongst a complex ecosystem of collaborators that each play a crucial role in our shared future.

Drawn from Water

MAY 26–SEPTEMBER 16, 2023

Karin van Dam, Ed Pien

Amsterdam-based Dutch artist Karin van Dam (b. 1959, Eindhoven) and Toronto-based Canadian artist Ed Pien (b. 1958, Taipei) first met in the late 1990s during a Paris residency and have been collaborating regularly over the past three decades. *Drawn from Water* is a presentation of van Dam and Pien's recent investigations of water not only as a source of vitality, mystery, and enchantment, but also as a co-creator in their individual and collaborative practices. The centrepiece of the exhibition is *Surfacing*, a new site-specific installation that engages with the complex natural and social histories of the local Sumas Lake and its surroundings. *Surfacing* is presented in dialogue with a selection of recent fibre sculptures and installations, as well as prints, drawings, and photographs, including some inspired by their 2017 trip across Canada together.

Van Dam's works on paper, large fibre sculptures, and immersive installations are made of a wide range of organic and industrial materials, often used in surprising combinations. The manual labour of knitting or drawing is, for van Dam, a process of searching for the point of equilibrium between order and chaos. In his works on paper and interactive multimedia installations, Pien celebrates pluriversality and attempts to champion those actors that have less autonomy, agency, and voice. (Under)water worlds have been particularly seductive to Pien, who often imbues them in his work with fantastical qualities.

Although their individual artistic practices are characterized by a distinct set of processes, techniques, and influences, the two multidisciplinary artists share an aesthetic sensibility underpinned by a deep investment in heightened awareness and embodied knowledge of natural and built environments, a strong desire to complicate perceptions of the relationships between human and non-human actors as hierarchical, and an attitude of wonder towards the unknown, uncontrollable, and potentially unknowable.

This exhibition is generously supported by the Canada Council for the Arts.

Knit works by Karin van Dam were produced in the TextielLab in Tilburg, the Netherlands, with support from the Mondriaan Fund.

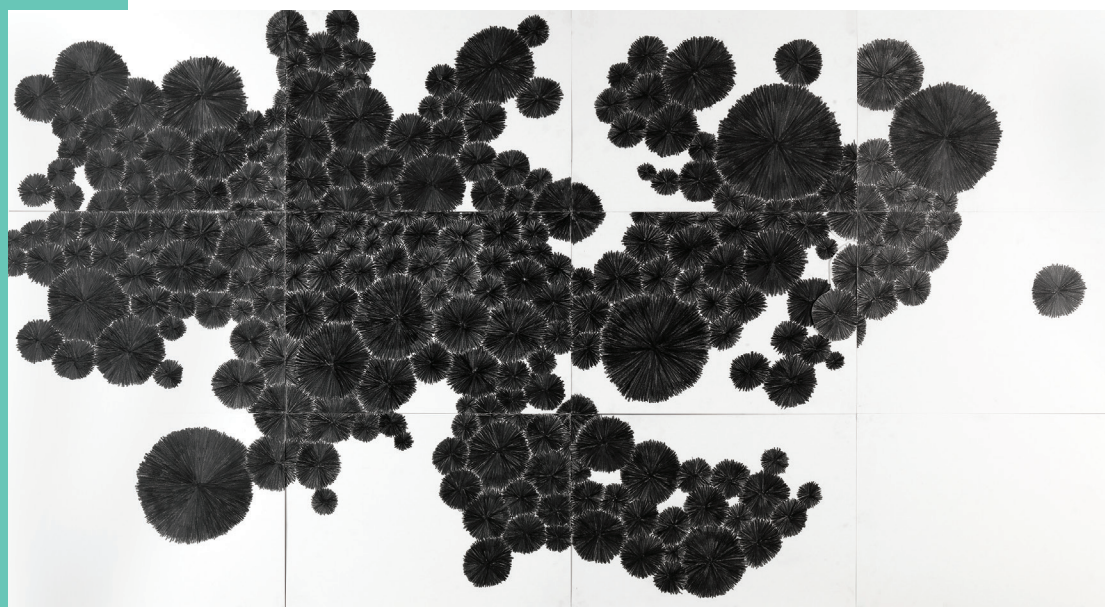


Canada Council
for the Arts

Conseil des arts
du Canada



mondriaan fund
for visual arts & cultural heritage



Van Dam and Pien investigate water not only as a source of vitality, mystery, and enchantment, but also as a co-creator in their individual and collaborative practices.



When Microbes Dream

MAY 26–SEPTEMBER 16, 2023

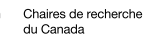
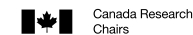
Jennifer Willet

The artistic and the scientific are often considered radically different ways of seeing, understanding, and making sense of our world(s). In the interdisciplinary work of Jennifer Willet, however, art and science collide to produce new modes of investigation and discovery. *When Microbes Dream* reimagines laboratory aesthetics as bountiful, feminine, and gaudy—in direct contradiction to scientific norms. In this world of whimsy, specimens and scientific processes are transformed into spectacles that question the boundaries between disciplines.

The exhibition presents a futurist vision, in which the human (scientist) is displaced from the top of the ecological hierarchy and agency is redistributed amongst the ecosystems' many non-human and human actors. Central to this vision is the notion of interspecies collaboration; performative sculpture, large-scale installation that incorporates live cultures, and a selection of digital prints are all populated by a menagerie of mammals, microbes, insects, and plants, working together to enact biotech processes for human audiences.

The Reach is the first Canadian venue of the exhibition's international tour, which has taken the works on view to Ljubljana, Slovenia, as well as Porto and Lisbon, Portugal.

When Microbes Dream is produced in partnership with IOTA Institute INCUBATOR Art Lab. This project gratefully acknowledges the support of the University of Windsor, the Canada Research Chair Program, Social Science and Humanities Research Council of Canada, the Ontario Arts Council, the Canada Council for the Arts, and the Province of Nova Scotia's Department of Communities, Culture and Heritage.



***When Microbes Dream* reimagines laboratory aesthetics as bountiful, feminine, and gaudy—in direct contradiction to scientific norms.**



Touring

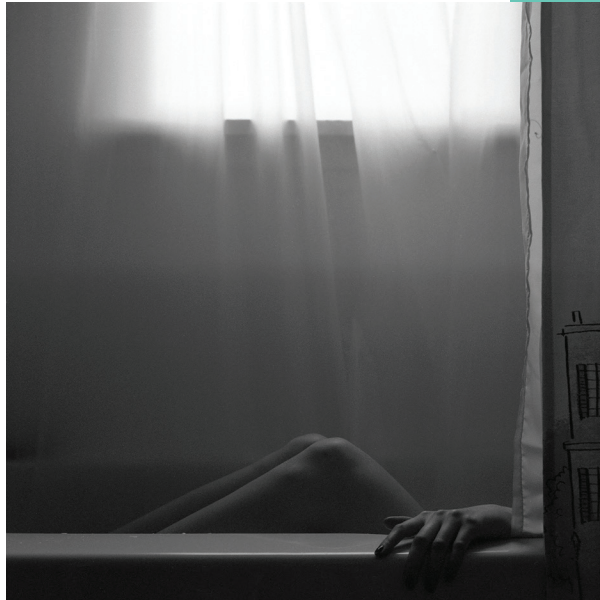
APRIL 29–SEPTEMBER 3, 2023
PEEL ART GALLERY MUSEUM AND ARCHIVES
BRAMPTON, ONTARIO

ਸ਼ੀਸ਼ੇ 'ਚ ਤਰੇੜ | *sheeshe 'ch tharer* | *a crack in the mirror*
Simranpreet Anand, with Conner Singh VanderBeek

On tour to the Peel Art Gallery Museum and Archives, this exhibition is a survey of recent works by artist Simranpreet Anand, including collaborative pieces with artist and scholar Conner Singh VanderBeek. Anand's practice, indebted to familial and cultural community, engages materials and concepts drawn from the histories of Punjab and its diasporas. The title of the exhibition, *sheeshe 'ch tharer*, captures the fissures emerging from her ongoing encounters with matter and material culture in our globalized world. The show features a new body of works that takes the synthetic, plastic-laden material culture that surrounds contemporary Sikh institutions as its starting point. Parallel to this series are works that consider the fabric of everyday life, attending to its embodied histories and gendered contexts of labour.

Guest curated by Sajdeep Soomal. Organized and circulated by The Reach Gallery Museum.

Anand's practice, indebted to familial and cultural community, engages materials and concepts drawn from the histories of Punjab and its diasporas.



Touring

MAY 30–JUNE 27, 2023
LANGLEY ARTS COUNCIL
ALDERGROVE, BC

AUGUST 5–26, 2023
KENT HARRISON ARTS COUNCIL
(RANGER STATION ART GALLERY)
HARRISON HOT SPRINGS, BC

SEPTEMBER 9–30, 2023
ABBOTSFORD ARTS COUNCIL
(KARITON ART GALLERY)

2023 Fraser Valley Biennial

The Fraser Valley Biennial is the premier regional group exhibition, bringing together exemplary works of contemporary art created in the Fraser Valley over the past two years. Since its start in 2011, the Biennial has showcased the work of more than 250 local and regional artists, many of whom have gone on to significant achievements in their respective practices.

This year's exhibition, guest curated by artist and scholar Candace Couse, brings together 22 artists who have responded to the theme "the body." The theme has been interpreted widely, and works in the exhibition include pieces that focus on issues of ability and disability, disease, strength and resilience, embodied self-hood, and the relationship between the body and technology.

The Biennial is coordinated every two years by The Reach Gallery Museum, where it is first presented in its entirety. A regional tour of the exhibition follows, developed in close collaboration with the curatorial staff from partner venues to create unique versions of the exhibition to suit the character and scale of each tour venue.

Don't miss the opportunity to enjoy this celebration of local talent when it is in your community.

Guest curated by Candace Couse. Organized and circulated by The Reach Gallery Museum.

The Fraser Valley Biennial exhibition is a dynamic, collective representation of exceptional artwork produced in the last two years by artists who call the Fraser Valley region home.

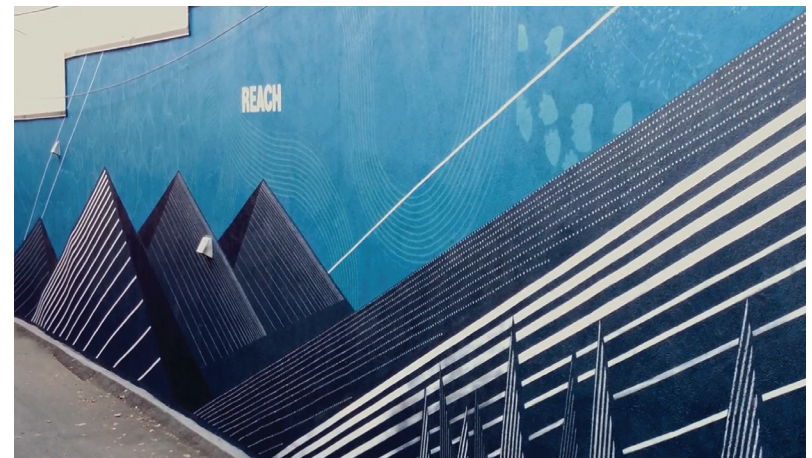
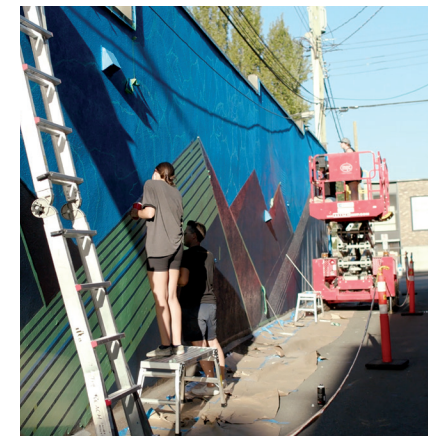
CITI/ SEEN

SUMMER 2023

This summer, The Reach is pleased to present the 5th annual installment in our CITI/SEEN mural program, which pairs a professional artist with a team of emerging artists to create an exciting new piece of public art in Abbotsford's downtown core.

CITI/SEEN is part of *Emerge*, a program at The Reach which acts as an incubator for creative talent in the Fraser Valley, offering mentorship and professional opportunities to aspiring artists and arts professionals between the ages of 18-35. The program is designed to allow participants to gain professional experience and practical skills in the arts and culture sector.

Emerge is made possible through generous support from the RBC Foundation™.



| Supporting up-and-coming artists and arts professionals.



Voices of the Valley

ONGOING

Explore rich collections of historical objects, photographs, and archival materials that tell the story of the community through the eyes of individuals who have shaped it.



winner

of the 2016 Governor General's
History Award for Excellence
in Community Programming



Learn more about the many different people
who have called the Fraser Valley home.



Community Arts Space

The Reach has a longstanding commitment to presenting community-based artworks. We partner with organizations from within the arts community and from broader fields of interest who have undertaken visual arts initiatives to create visibility for their efforts. Community Arts Space is an application-based opportunity for all community groups to exhibit art projects at The Reach.

Central Fraser Valley Graphic Guild

MAY 26–JUNE 10

The Central Fraser Valley Graphic Guild is a group of local artists living in the Lower Fraser Valley of British Columbia. It is a non-profit, volunteer-run organization. The club was originally formed in 1977 with a vision of promoting, and informing the public about, printmaking and providing opportunities for its members to display their artwork within the community. It grew from these beginnings to include all forms of art or mediums and to be open to all artists. Members develop bonds of friendship, provide each other with inspiration, and exchange artistic knowledge.



Art Activism Class

ABBOTSFORD SENIOR SECONDARY

JUNE 14–24

This year, Abbotsford Senior Secondary’s Art Activism class studied Indigenous perspectives, knowledge, and issues. In particular, the colonial values that underlie Canadian criminal laws, policies, and practices and have negative impacts on Indigenous peoples. Through collaboration with the University of British Columbia and Corrections Canada, students finished the paintings that incarcerated Indigenous citizens began in healing lodges as an act of healing, learning, and reconciliation.

Participating Artists

Jasmin Braich
Ivy Bryeide
Angie Calhoun
Ivan Tran Dang
Dakota Deline
Khloe Gibson
Torin Gillard
Andrei Gueco

Jennifer Guthrie
Sofia Isaak
Tanisha Kashyap
Mia Kelemen
Vyctor Le
C Luu
Cheyanne McLean
Lanz Cedrick Moen

Tristan Pelletier
Tekoa Price
io Reitsma
Paramveer Sandhu
James Sullivan
Acadia Toney
Milo Waller



Art Camps

Join us at The Reach for an exciting summer of art exploration! Craft, create, and collaborate with other campers on fun and engaging art activities. Play art games, experience new processes and enjoy the good weather this summer with art camps inspired by our current exhibitions.

Summer Art Camps

10:30AM-2:30PM | AGES 6-13 YRS
\$150 PER 5-DAY CAMP
10% OFF FOR FRIENDS OF THE REACH

NEW THIS YEAR! Elementary School campers will experiment with a variety of introductory art techniques and processes, including plein-air landscape drawing, alternative water-based techniques and art games designed to enhance creative thinking. Working collaboratively with other campers, they will create an abstract vinyl mural in the Art Studio over the course of the week, to be unveiled on our social media channels at the conclusion of camp.

NEW THIS YEAR! Middle School campers will work collaboratively over the course of the week to transform the Art Studio into an immersive art installation inspired by current exhibition artist Karin van Dam. Using fabric and light to curate the environment, students will take the reins in this introduction to creative decision-making and experiential atmosphere.

The student artwork will be unveiled on our social media channels at the conclusion of camp. Additional activities include alternative water-based techniques, paper mâché, and more!

Campers are asked to bring a nut-free lunch, a water bottle, and weather-appropriate clothing for outdoor art adventures.

- | | |
|---------------|--|
| Week 1 | July 4-7 (Ages 6-10, please note this 4-day camp is \$120) |
| Week 2 | July 10-14 (Ages 11-13) |
| Week 3 | July 17-21 (Ages 6-10) |
| Week 4 | July 24-28 (Ages 11-13) |
| Week 5 | July 31-August 4 (ages 6-10) |
| Week 6 | August 8-11 (Ages 11-13, please note this 4-day camp is \$120) |
| Week 7 | August 14-18 (Ages 6-10) |
| Week 8 | August 21-25 (Ages 11-13) |

Register online by visiting our website or call us at 604.864.8087 for more information.

summer events



Opening Reception

MAY 26 | 6:30-8:30PM
FREE | ALL ARE WELCOME

Join us in a celebration of our new season of exhibitions at The Reach! Opening parties are a great opportunity to connect with the thriving cultural community in Abbotsford and learn more about upcoming events.

Don't miss a special evening with Ed Pien, Karin van Dam, and Jennifer Willet (who will be performing in the role of the Gentleman Scientist).

All are welcome, light refreshments and a cash bar will be available.

Artist Talk

DRAWN FROM WATER

MAY 27 | 1:30-2:30PM
FREE | EVERYONE WELCOME

Karin van Dam and Ed Pien will discuss their solo and collaborative work (on view at The Reach until Sept 16), *Drawn from Water*, including their archival and field research on the complex natural and social histories of Sumas Lake for their new site-specific installation, *Surfacing*.

Abbotsford Film Festival

AUGUST 25 & 26 | 6PM
\$15 PER DAY | AGES 19+

The Abbotsford Film Festival returns for its 4th edition Friday, August 25, and Saturday, August 26, in partnership with The Reach. Get your tickets for a celebration of the arts in our community. Experience this two-day event, showcasing a diverse selection of short films, documentaries, music videos, and live music.

This year, participate (or just come watch) their biggest ever 48-hour film competition with huge prizes.

Curated 48-hour film entries screen Friday, August 25.



2SLGBTQIA+ Seniors Event

JUNE 8 | 1-5PM | FREE
 ABBOTSFORD RECREATION CENTRE

Visit our table at Archway Community Services 2SLGBTQIA+ Seniors Event to chat with staff about volunteer opportunities and programming for seniors at The Reach.

National Indigenous Peoples Day

JUNE 19 | PERFORMANCE TIMES VARY
 FREE | ABBOTSFORD ARTS CENTER

Join us for a fun-filled evening as we present a day of dramatic performance inspired by our award-winning children's book *Semá:th Xó:tsa: Sts'ólemeqwelh Sxó:tsa / Great-Gamma's Lake*.

Professional puppeteer Tamara Unroe worked with students from Abbotsford School of Integrated Arts (ASIA)—Sumas Mountain over eight weeks to develop and present a larger-than-life performance starring illuminated puppets based on more-than-human beings that would have once lived in and around the lake. Performance times will be posted on our website as they are determined.



Festivals & Events

The Reach Gallery Museum is dedicated to serving the people in our community as an engaged listener, active participant, and cultural resource for community events. You can find us this summer conducting a variety of interesting arts activities at festivals and events. We hope you stop by and say hello!



Canada Day

JULY 1 | 1-5PM | FREE
 EXHIBITION PARK | 32470 HAIDA DR.

Stop by during the City of Abbotsford's Canada Day celebration for a limited-edition art print created right before your eyes!

Fraser Valley Pride Fest

JULY 29 | 12-8PM | FREE
 FRASER RIVER HERITAGE PARK,
 MISSION

Celebrate the 11th annual Fraser Valley Pride Fest! Visit The Reach's booth for fun family activities that celebrate and promote diversity.

Berry Fest

JULY 8 | 12-8PM | FREE
 DOWNTOWN ABBOTSFORD

Berry Fest is an Abbotsford tradition! Check out this family-friendly community festival and drop by The Reach's tent to participate in berry themed art activities all afternoon!

Go Play Outside

Ocean Water Drawing in the style of Ed Pien

FRIDAYS MAY 26–SEPTEMBER 8 | 3-7PM
MILL LAKE PARK (WARE ST. ENTRANCE)

The Reach has partnered with the City of Abbotsford's "Go Play Outside" initiative to bring art and culture to the great outdoors this summer!

Our special Go Play Outside EduKit is inspired by artist Ed Pien, whose Ocean Drawings are currently on display at The Reach. The artist says, "Ocean drawing presents my ongoing celebration of water's sentience: that water has co-agency, creativity, and liveliness."

Kids and parents alike will have a blast playing with salt and pigment to create dream-like, crystalline paintings. This activity is great fun for all ages! The kit includes information on the artist, art materials, educational information about ocean water, and a special recipe to mix your own ocean water at home! Pick up your free kit this summer and participate in engaging on-site and at-home activities. Check the City of Abbotsford's social media pages for up-to-date information about when and where to get your kit!

Get your FREE craft kit inspired by artist Ed Pien!

How to get your kit (while supplies last):

- In person at The Reach
- At one of this summer's Go Play Outside events
- Order online at: thereach.ca/resources



Sponsored by



Group Tours

Groups of all ages are welcome to drop in at The Reach for a free, informal tour of our current exhibitions from one of our volunteer docents on select days. Please call ahead to confirm docent availability. Drop in tours are first-come, first-served.

If your group requires a guaranteed tour at a specific time, please complete the online booking form at least 2 weeks in advance of your visit. We offer a guided tour of current art or history exhibitions (30-60 mins.). Bookable group tours cost \$4.50 per person.

If your group is looking for a hands-on activity, our 'Tour & Try' program is a tour followed by a facilitated art activity related to our current exhibitions (1-2 hours total). A Tour & Try visit costs \$7 per person.

School Visits

Visiting The Reach is a great way to engage students with art, history & culture in a fun and accessible environment! Not only that, but school visits are also open to groups of children outside of traditional schooling! Camps, clubs, youth groups, day cares, homeschoolers, and more are welcome to access our program!

School visits are available Tuesday – Friday, between 10am and 2pm. We offer a guided tour of current art or history exhibitions (30-60 mins.) or a 'Tour & Try' –which is a tour followed by a facilitated art activity related to our current exhibitions (1-2 hours total).

Please note we require at least one adult to accompany every 10 children (there is no charge for chaperones). Due to space limitations, we cannot accommodate more than 32 children inside The Reach at any one time. If you have over 32 students, please contact The Reach prior to submitting a form for accommodation options.

CLASSES OF 15 PEOPLE OR LESS

OPTION 1, TOUR ONLY: Guided tour of our current exhibitions (30-60 mins. depending on age group). \$4.50/person

OPTION 2, TOUR & TRY: Guided tour of our current exhibitions (30-60 mins. depending on age group). Followed by a 30-60 minute art activity related to our current exhibitions. \$7/person.

GROUPS OF 16–32 PEOPLE

TOUR & TRY: Guided tour of our current exhibitions (30-60 mins. depending on age group). and a 30-60 minute art activity related to our current exhibitions. \$7/person (please note students will be split into two groups; one group will start with a tour and the other group will start with the art activity).

To request a school visit, please complete the booking form on our website <https://thereach.ca/visit/> at least 2 weeks in advance of your visit.



Join Our Team!

Docent and Volunteer Program

The Reach is a vibrant and creative environment for volunteers.

Our docent program offers training and mentorship opportunities to learn and grow as a museum educator. As an exhibitions guide, you will activate our exhibitions through tours, engaging guests in informative and inquiry-based discussions about art, history, and culture.

Other volunteer opportunities include working as a gallery attendant, supporting special events like opening receptions and artist talks, and working with kids and youth in our education programs.

Why volunteer at The Reach?

- Help provide a valued service to the community
- Meet interesting new people
- Get involved in exciting special events and programs
- Get the inside scoop on exhibitions and collections
- Enhance your resumé and gain practical work experience
- Have fun!

Become a Friend of The Reach!

When you become a Friend of The Reach, you help to support the wide range of exhibitions, programs, and events that we offer to our community year-round.

Last year, support from the Friends of The Reach helped us:

- Lower barriers to access for visitors from all walks of life through our pay-what-you-can admission program
- Present a total of 13 exhibitions featuring the work of 15 Canadian artists
- Share 5 community art projects involving 28 community participants
- Support 14 emerging artists to create, curate, and exhibit projects
- Offer over 200 programs to 7,500 members of our community

Becoming a Friend of The Reach is the most rewarding way to support art, history, and culture in Abbotsford and the Fraser Valley. Join us to become part of a welcoming and creative community, and enjoy exclusive access to the best The Reach has to offer.

Become a Friend of The Reach to:

- Delve into art and culture with curators, artists, and historians
- Enjoy first access and special invitations to previews, workshops, and more
- Save 10% on all classes and programs
- Stay informed with exclusive insights and events



Image Credits

Cover

Top: Karin van Dam, *Organism*, 2023, graphite on paper, 34.5 x 46.25 in.

Bottom: Ed Pien, *RainForest 2*, 2016, digital print on archival cotton paper, 29 x 44 in.

Page 1

Top: Karin van Dam, *Organism*, 2023, graphite on paper, 34.5 x 46.25 in.

Middle Left: Ed Pien, *Amidst Blue and Black Kelps*, 2023, ink and coloured pencil on 3M reflective film laminated on shoji, 20 in. x 15 in.

Middle Right: Ed Pien, *RainForest 2*, 2016, digital print on archival cotton paper, 29 x 44 in.

Bottom Left: Jennifer Willet, *The Biosafety Puppet Playhouse*, 2020, performance object and sculpture, 84 x 66 x 36 in.

Bottom Right: Jennifer Willet, *When Microbes Dream* (detail), installation dimensions variable. Image Credit: Jennifer Willet, Ectopia Lab, 2022

Page 3

Top: Karin van Dam, *Organism*, 2023, graphite on paper, 34.5 x 46.25 in.

Bottom: Ed Pien, *RainForest 2*, 2016, digital print on archival cotton paper, 29 x 44 in.

Page 4

Jennifer Willet, *The Biosafety Puppet Playhouse*, 2020, performance object and sculpture, 84 x 66 x 36 in.

Page 6

Top: Simranpreet Anand with Conner Singh VanderBeek, ਮਾਲ ਕੈ ਮਾਨੈ ਰੂਪ ਕੀ ਸੋਭਾ ਇਤੁ ਬਿਧੀਨਨਮੁ ਗਵਾਇਆ | *maal kai maanaa roop kee sobhaa it bidhee janam gavaiaa* (detail), 2021, cardboard tubes, various synthetic fabrics, ashes, soot, charred and melted plastic, dimensions variable. Rachel Topham Photography

Bottom: Simranpreet Anand with Conner Singh VanderBeek, ਕਉਣੁ ਸੁ ਸਨਮੁਖੁ ਕਉਣੁ ਵੇਮੁਖੀਆ | *kaunu su sanamukh kaun vemukheea* ||, 2021, single channel colour video with sound, 5:06, Gurbani radio, cushions, white sheet.

Rachel Topham Photography

Page 8

Top Left: Devon Riley, *Leave No Trace*, 2022, analog photography, 16 x 16 in.

Top Right: Tracie Stewart, воды *Body of Water*, 2022, graphite and pigment on stone paper, mounted on cradleboard, 9 x 12 x 2 in.

Middle Left: Amy Dyck, *Chaos and Order*, 2021, spray paint with charcoal and oils on cradle board, 30 x 24 in.

Middle Right: Cobi Timmermans, *One Year Anniversary*, 2021, digital print on paper, 24 x 24 in.

Bottom Left: Olivia de Fleuriot Perry, *Tomorrow will be no different from today*, 2022, photograph, 24 x 30 in.

Bottom Right: Erica Grimm, *Become animate, as if the earth were breathing through you*, 2021, graphite and road sediment on rag paper, 22 x 30 in.

Page 12

Neil Loewen, *Historic Millers Landing*, 2021, acrylic on canvas, 24 x 30 in.

Page 16

Image Credit: Abbotsford Film Festival

Page 17

Jennifer Willet, *When Microbes Dream* (detail), installation dimensions variable. Image Credit: Jennifer Willet, Ectopia Lab, 2022

Page 18

Image Credit: Rachel Topham Photography

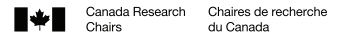
Page 20

Ed Pien, *Luminous Bodies from Ocean Water Drawing: We Are Stardust*, 2017-2018 collaboration with Halifax Harbour Ocean Water, ink, and conte. 11.5 x 16.5 in.

Page 22

Image Credit: Rachel Topham Photography

The Reach is a public gallery museum supported by the City of Abbotsford, corporations, private citizens and Reach Friends.



the reach
GALLERY MUSEUM

604.864.8087 | THEREACH.CA
32388 Veterans Way, Abbotsford, BC



TheReachGalleryMuseum



TheReach



thereachgallery